

CAMPAIGN TO SAVE HARVEY RANCH



A successful Campaign to Save Harvey Ranch will give East Bay residents exciting new access to thousands of acres of pristine wilderness nearby, while adding extra protection to one of our most vital wildlife refuges.

Hidden in the center of our bustling metropolitan area is something remarkable: a 15,000-acre natural area formed by the two protected landscapes of Las Trampas Regional Wilderness and the San Leandro Watershed. This wilderness wonderland is interlaced with superb trails that offer exceptional views of the surrounding East Bay Hills, Mount Diablo, the sparkling waters of San Leandro Reservoir, and the distant shorelines of San Francisco Bay. The rugged edges of the area's chaparral-covered ridges reflect a geological history shaped by major fault lines. Steep elevations shelter a largely unexplored landscape—inaccessibility makes the area unfamiliar to many avid outdoor enthusiasts.

Protecting the 143 acres of Harvey Ranch, adjacent to Saint Mary's College in Moraga, will allow many nature lovers to experience this delightful wilderness for the first time, with minimal impact, while providing a necessary buffer between essential wildlife habitat and encroaching development.

CAMPAIGN HIGHLIGHTS

\$4M CAMPAIGN
BUDGET

DEADLINE

DECEMBER 31, 2022

HARVEY RANCH



- 143 untouched acres



- Gateway to 15,000 acres of pristine wilderness



- New staging area, trailheads, and trail connections



- Convenient to entire East Bay



- Quick access to exceptional views and pathways



- Enhanced buffer for wildlife



- Protected viewshed



- Preservation of Saint Mary's College environs

FEATURES

PROJECT GOALS:

EXPAND - Offer low-impact recreation to thousands of pristine acres

INSPIRE - Provide a wilderness experience that inspires both young and old

PROTECT - Add a critical buffer for wildlife habitat

CONNECT - Bring together trail systems of regional importance

ENHANCE - Preserve the bucolic setting of Lamorinda and the idyllic campus of Saint Mary's College

CAMPAIGN TO SAVE HARVEY RANCH



Protecting 143-acre Harvey Ranch will open a wilderness adventure to nature lovers of all ages and abilities, while protecting wildlife habitat from residential encroachment. Short walks will be rewarded with stunning views. Hikers seeking strenuous excursion will explore miles of trails in diverse terrain. Visitors will admire soaring raptors as they follow fresh tracks on the ground. Equestrians will discover excellent ranch roads used for over a century.

A NEW GATEWAY

The 15,000-acre wilderness formed by Las Trampas and the San Leandro Watershed is unexplored by most. Entering from east or west requires a daunting climb up steep hills. The southern entrance lacks the convenience needed by time-pressed visitors. **Harvey Ranch will be a convenient northern entrance that makes some of the best views an easy walk up gentle slopes.** By providing parking near trail heads, its adjacency to populated neighborhoods, and making connections to existing trails, Harvey Ranch will become a launching point for new generations of explorers.

For young people to appreciate nature, and treasure it, they need to experience it first hand. Harvey Ranch is a key that will unlock the wilderness experience for budding nature enthusiasts.

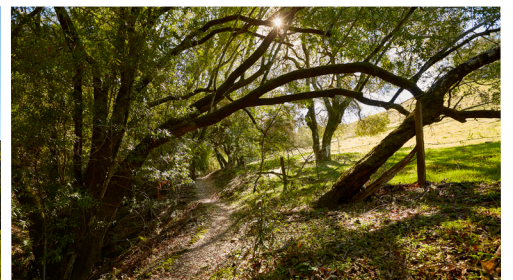
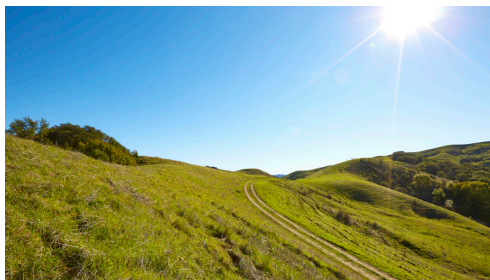
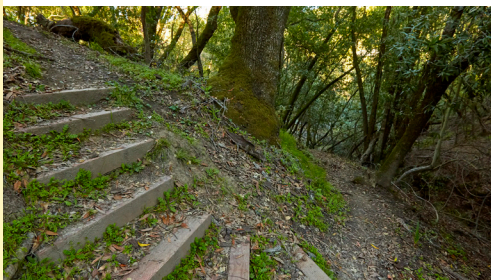
WILDLIFE

As our population expands, more houses will be built—ideally in the most sensible places. **When a property with the extraordinary conservation values of Harvey Ranch becomes available, it must be preserved.** The ranch protects habitat for threatened and endangered species such as the Alameda whipsnake and the California red-legged frog. These lands harbor gray foxes, deer, opossums, raccoons, gophers, jackrabbits, weasels, bobcats, and skunks. Indeed, Las Trampas is Spanish for “The Traps,” a reference to snares once set in the chaparral to catch elk. Mountain lions have been spotted. Raptors include red-tailed and Cooper’s hawks, American kestrels, and golden eagles. In the watershed are canvasback and mallard ducks, American coots, osprey, great blue herons, and great egrets. Resident reptiles and amphibians include the Northern alligator lizard, gopher snake, striped racer snake, the Pacific rattlesnake, and Western pond turtle.

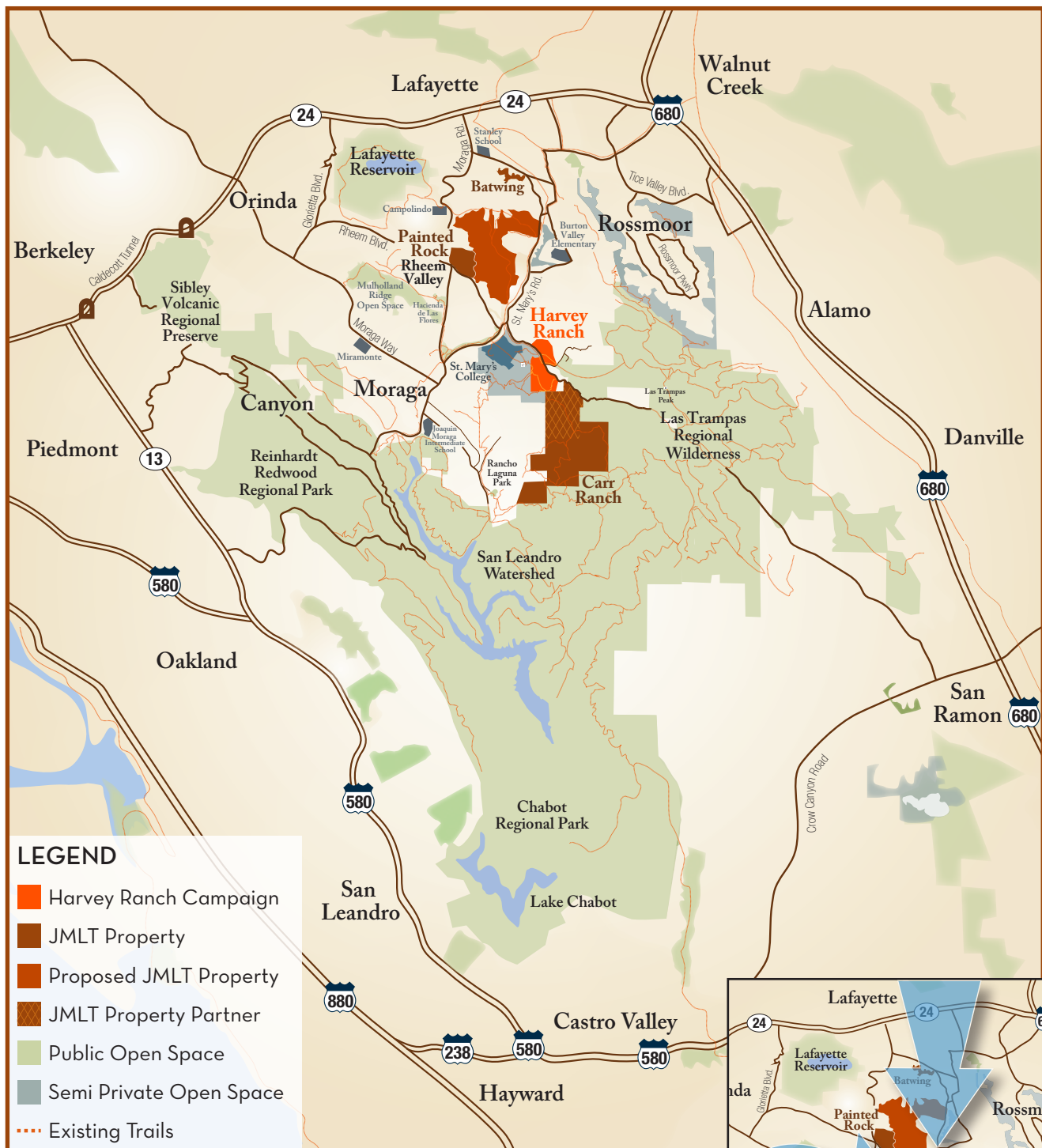
RECREATION & TRAILS

Acquiring Harvey Ranch is a strategic priority. In 2016 JMLT protected Carr Ranch, a 604-acre missing piece in the San Leandro Watershed. JMLT and our partners have secured an easement for a trail corridor that connects Harvey to Carr. Acquiring Harvey Ranch is the third and final step to complete a northern point of entry for the entire 15,000-acre area:

- From the Lafayette-Moraga Regional Trail system it will be an easy detour to reach the high ground of Carr Ranch and its spectacular views.
- The historic Old Moraga Ranch Trail and the marvelous Carr Ranch Loop will benefit from new access points.
- Nearby destinations heard about, but infrequently visited, will become routine stops—such as the jagged outcroppings of Rocky Ridge and the perennial streams of Buckhorn Creek.



A NEW GATEWAY TO WILDERNESS



Join Us!

Help save Harvey Ranch and open it for everyone to enjoy. **Please make a donation today.**
Thank you! jmlt.org/harvey





BEAUTIFUL ENVIRONS

Lamorinda neighborhoods are surrounded by gorgeous hills interlaced with delightful tree-lined trails. Harvey Ranch is prominently featured as you drive along Saint Mary's Road. Admirers of the stunning campus of Saint Mary's College will instantly appreciate how these acres protect the bucolic ambiance of this community resource. The boundary of the campus will be effectively expanded by dozens of new acres of permanently protected lands open to both students and the public.

THE HARVEY FAMILY

The Harveys are among the conservation icons who shaped the modern Bay Area. Charlene Harvey led the fundraising campaign to protect Crissy Field and served as board president of Golden Gate National Parks Conservancy and director of the Presidio Trust. Her late husband, Jim Harvey, was president and CEO of TransAmerica Corporation. He lobbied Congress to create the Presidio Trust, helped to establish the Golden Gate National Recreation Area, and served as chairman of the Presidio Council of the Golden Gate National Park Association. Their family ranch in Moraga has been a working cattle ranch and cherished getaway since the mid-1960s. [Recognizing its importance as a natural resource and wilderness buffer, Charlene and her family are generously making the property available for conservation.](#)

THREAT

A few minutes spent in daily traffic on the once-rural roads of Lamorinda make it clear that the area is booming. Population pressure grows as each new home is built and new traffic light is installed. [Protecting Harvey Ranch is a rare opportunity to save a landscape that is universally recognized as a critical conservation milestone—a gem to be spared from bulldozer, concrete, and asphalt.](#)

ABOUT JOHN MUIR LAND TRUST

John Muir Land Trust protects and cares for open space, ranches, farms, parkland and shoreline in Contra Costa and Alameda Counties. In a generation, JMLT has become one of the leading forces for conservation in northern California. With 3,500 acres protected, many beautiful places in the East Bay are permanently preserved for recreation, wildlife habitat and spectacular scenic views. JMLT believes that the vitality of our open spaces is essential to the health of our earth, air, water, native plants and animals – and all of us.

